

23° IAFE-NRI International Conference
THE CAP AND NATIONAL PRIORITIES WITHIN THE EU BUDGET AFTER 2020
11-13th June 2018, Lidzbark Warmiński

The adoption of agricultural insurance to manage farm risk: preliminary evidences from a field survey among Italian and Polish farmers

Samuele Trestini, **Elisa Giampietri**

*University of Padova (Italy)
Department of Land, Environment, Agriculture and Forestry*

Magdalena Śmiglak-Krajewska

*Poznań University of Life Sciences (Poland)
Department of Finance and Accounting*

INTRODUCTION

✓ **Renewed emphasis on RM in AGRICULTURE within the CAP** (Reg. EU n. 1305/2013; Reg. EU n. 2393/2017 - Omnibus Reg.)

INSURANCE (against adverse climatic events, animal or plant diseases, pest infestations, environmental incidents):

- reduction of the threshold for indemnification from 30% to 20%
- increase of public support from 65% to 70%
- introduction of index-based insurance schemes

Participation rates are still below those desired by policy makers:

heterogeneous insurance uptake within Europe and each MS

LITERATURE

REASONS OF THE LIMITED PARTICIPATION

- Moral Hazard & Adverse Selection (justifying the public intervention)
- **FARMERS' WILLINGNESS TO ADOPT INSURANCE**

DETERMINANTS OF FARMERS' ADOPTION OF INSURANCE TOOL

- Risk Aversion & Risk Perception, farm and farmer characteristics, etc.

Scarcity of in-depth field investigations at farm-level and research in behavioral economics issues related to insurance adoption decision at farm level

DATA AND METHODS

- **FIELD SURVEY** (started in December 2017): **direct interviews among farmers**
- 181 farmers: 111 in **Italy** (*Veneto* region) + 70 in **Poland** (*Wielkopolska Voivodeship*)
- **Structured questionnaire:**
 - designed on both existing literature and a preliminary survey (22 Polish + 23 Italian farmers) and pre-tested on a small sample of respondents (N = 15)
 - statements: **5-pt Likert scales to measure variables** (to measure variables)
 - socio-demographics

Sample descriptive statistics – ITALY (N=111)

Categories	Description	N. Obs	%	Mean	S.D.
Gender	0 - female	30	27.0		
	1 - male	81	73.0		
Age (years)	1 - less than 35	47	42.3		
	2 - 35-44	30	27.0		
	3 - 45-54	14	12.6		
	4 - 55-64	13	11.7		
	5 - more than 65	7	6.3		
Average farm revenue (gross income from farming/year)	1 - less than 50.000	66	59.5		
	2 - 50.000 - 100.000	29	26.1		
	3 - 100.000 - 250.000	11	9.9		
	4 - more than 250.000	5	4.5		
Utilised agricultural area (UAA)	n. hectares			14.6	18.6

DESCRIPTIVE STATISTICS OF THE SAMPLE

Sample descriptive statistics – POLAND (N=70)

Categories	Description	N. Obs	%	Mean	S.D.
Gender	0 - female	25	35.7		
	1 - male	45	64.3		
Age (years)	1 - less than 35	39	55.7		
	2 - 35-44	16	22.9		
	3 - 45-54	10	14.3		
	4 - 55-64	5	7.1		
	5 - more than 65	-	-		
Average farm revenue (gross income from farming/year)	1 - less than 50.000	44	62.9		
	2 - 50.000 - 100.000	21	30.0		
	3 - 100.000 - 250.000	4	5.7		
	4 - more than 250.000	1	1.4		
Utilised agricultural area (UAA)	n. hectares			141.8	815.2

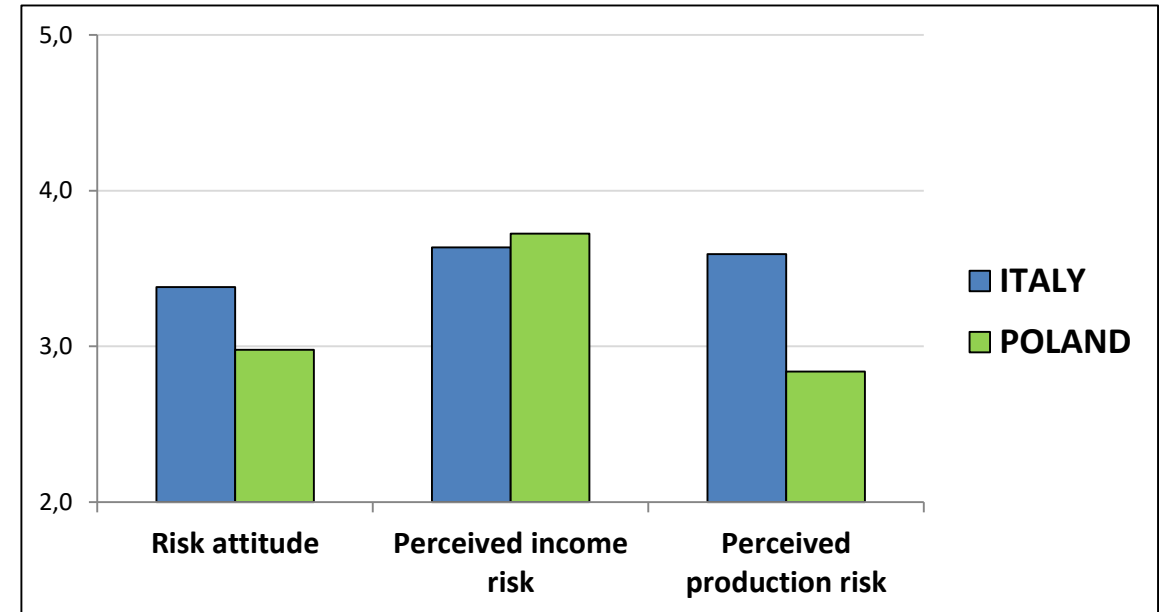
MACROCATEGORIES OF FARM TYPES

farm type	N.Obs.	%		N.Obs.	%
ITALY					
CROPS	24	22	<i>Field crops</i>	13	54
			<i>Horticulture</i>	11	46
PERMANENT CROPS	56	50	<i>Viticulture</i>	30	54
			<i>Other permanent crops</i>	26	46
LIVESTOCK	13	12	<i>Cattle livestock (non-dairy)</i>	3	23
			<i>Dairy cattle</i>	1	8
			<i>Pigs</i>	0	0
			<i>Poultry</i>	9	69
			<i>Rabbitry</i>	0	0
MIXED	18	16	<i>Mixed cropping</i>	2	11
			<i>Mixed livestock</i>	1	6
			<i>Mixed crops-livestock</i>	15	83
POLAND					
SPECIALIZED (<i>crop</i>)	22	31			
MIXED	48	69			

PERCEIVED INCOME AND PRODUCTION RISK at farm level and SUBJECTIVE RISK ATTITUDE

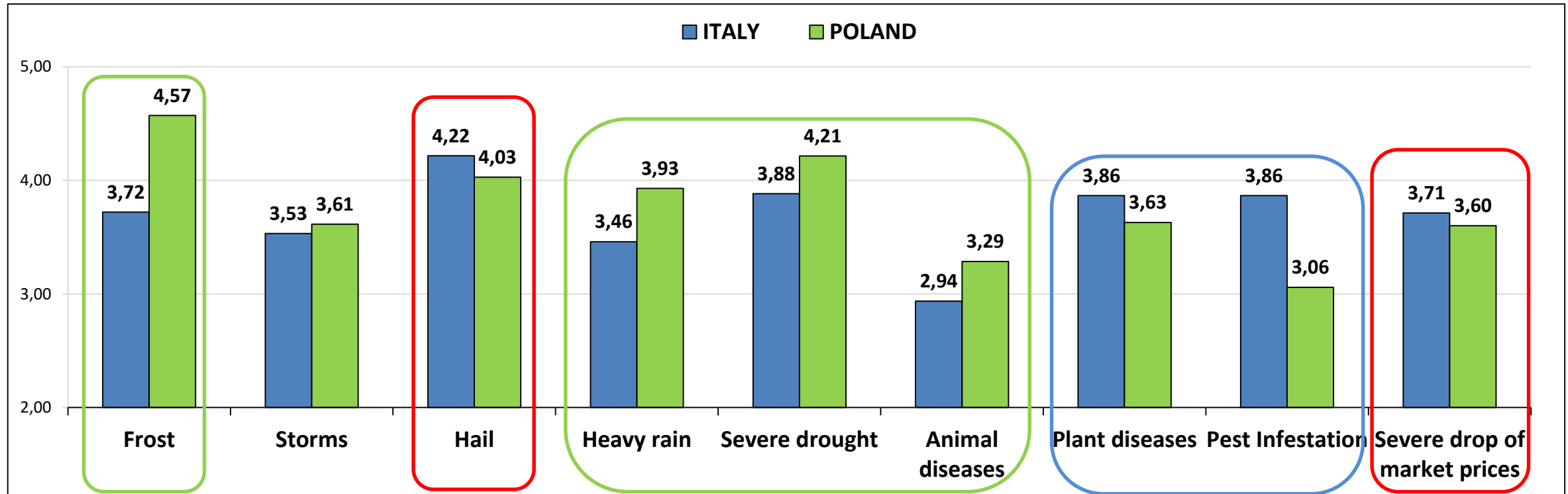
	Risk attitude		Perceived income risk		Perceived production risk	
	Mean	S.D.	Mean	S.D.	Mean	S.D.
ITALY	3.40	0.27	3.60	0.13	3.60	0.15
POLAND	3.00	0.50	3.70	0.17	2.80	0.50

Note: 6 items for risk attitude, 3 items for perc. Income/prod. risk



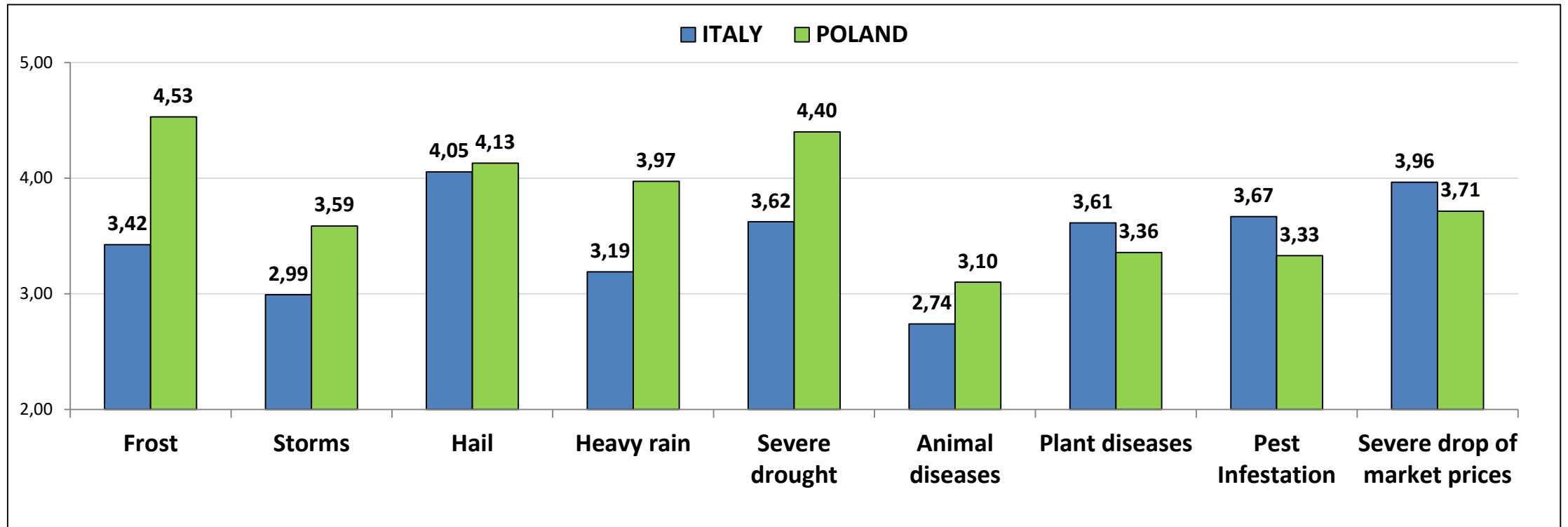
ITALY	CROP		PERMANENT		LIVESTOCK		MIXED	
	Mean	S.D.	Mean	S.D.	Mean	S.D.	Mean	S.D.
perceived income risk	3.65	0.17	3.64	0.19	3.49	0.16	3.72	0.20
perceived production risk	3.49	0.10	3.64	0.16	3.36	0.19	3.76	0.17
risk attitude	3.55	0.30	3.43	0.32	2.88	0.43	3.36	0.23

PERCEIVED RISK FREQUENCY at farm level



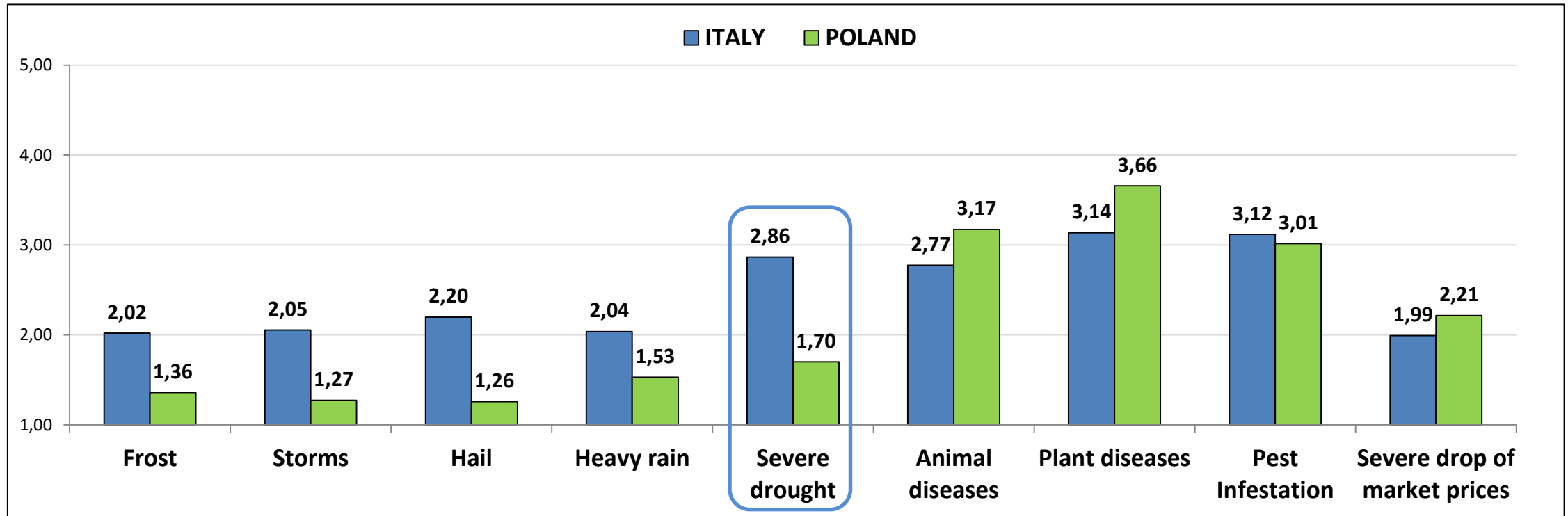
		Frost	Storms	Hail	Heavy rain	Severe drought	Animal diseases	Plant diseases	Pest Infestation	Severe drop of market prices
ITALY	Mean	3.72	3.53	4.22	3.46	3.88	2.94	3.86	3.86	3.71
	S.D.	1.01	1.13	0.87	1.15	1.05	1.28	0.94	1.00	1.12
POLAND	Mean	4.57	3.61	4.03	3.93	4.21	3.29	3.63	3.06	3.60
	S.D.	0.50	0.98	0.87	0.95	0.68	1.25	1.11	1.02	1.13

PERCEIVED RISK IMPACT at farm level



		Frost	Storms	Hail	Heavy rain	Severe drought	Animal diseases	Plant diseases	Pest Infestation	Severe drop of market prices
ITALY	Mean	3.42	2.99	4.05	3.19	3.62	2.74	3.61	3.67	3.96
	S.D.	1.27	1.17	1.13	1.14	1.21	1.41	1.17	1.27	1.11
POLAND	Mean	4.53	3.59	4.13	3.97	4.40	3.10	3.36	3.33	3.71
	S.D.	0.50	1.00	0.87	0.76	0.52	1.41	1.27	1.25	1.36

PERCEIVED RISK CONTROL at farm level

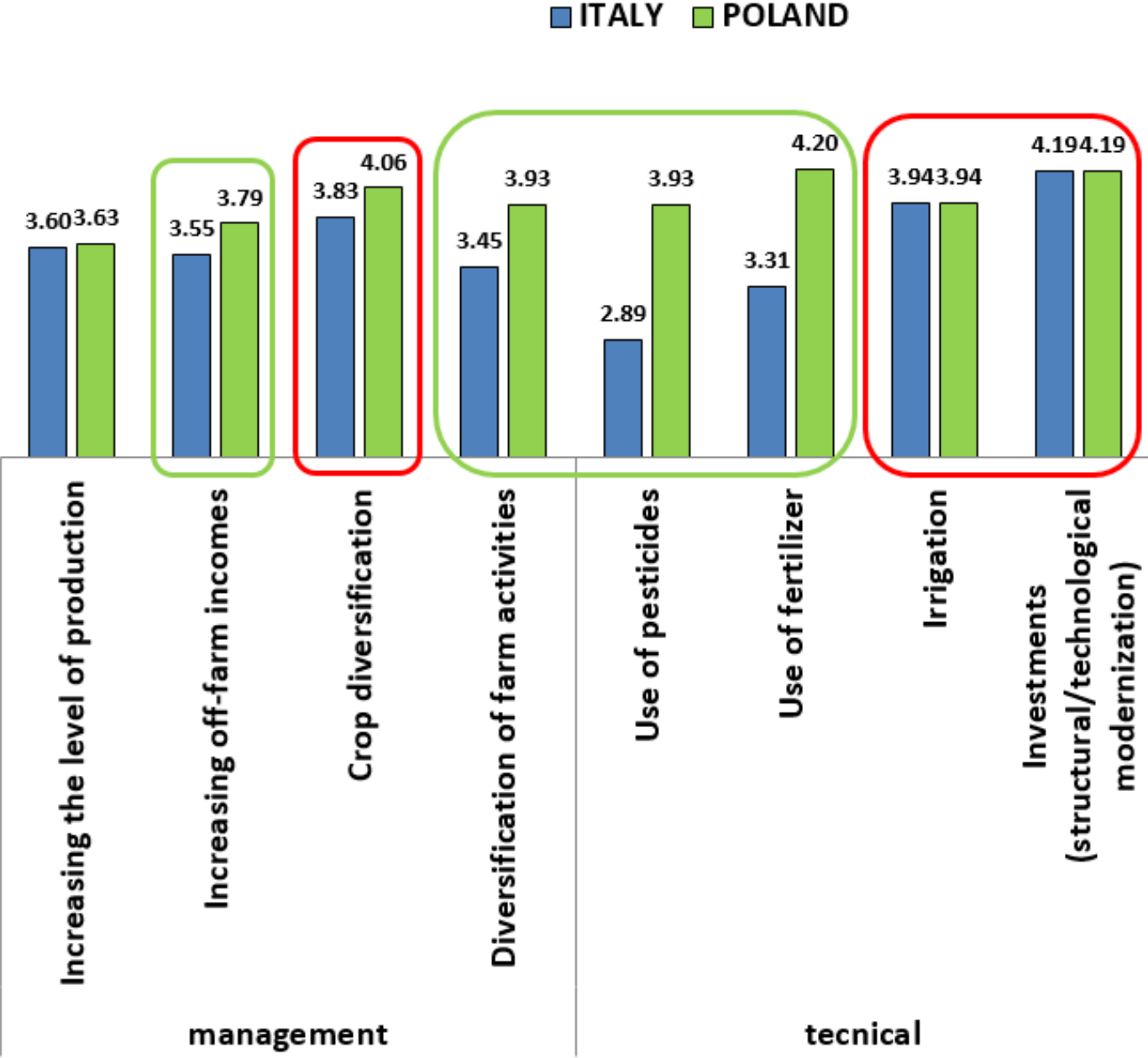


		Frost	Storms	Hail	Heavy rain	Severe drought	Animal diseases	Plant diseases	Pest Infestation	Severe drop of market prices
ITALY	Mean	2.02	2.05	2.20	2.04	2.86	2.77	3.14	3.12	1.99
	S.D.	1.18	1.20	1.37	1.21	1.33	1.29	1.21	1.21	1.17
POLAND	Mean	1.36	1.27	1.26	1.53	1.70	3.17	3.66	3.01	2.21
	S.D.	0.78	0.59	0.53	0.81	0.91	1.08	0.78	1.06	1.20

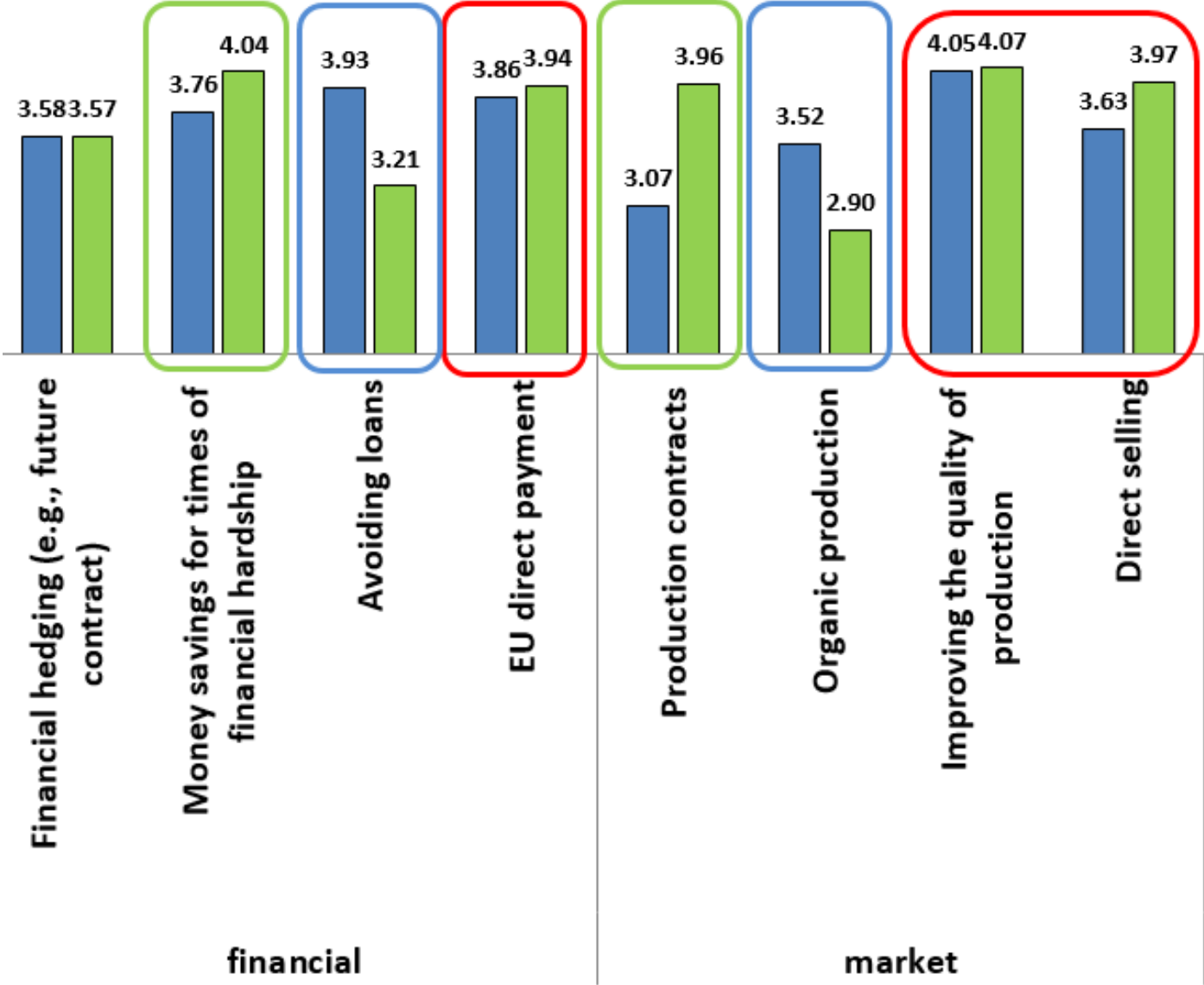
PREFERRED SELF-COPING STRATEGIES

	ITALY		POLAND	
	Mean	S.D.	Mean	S.D.
Production contracts	3.07	1.11	3.96	0.67
Irrigation	3.94	0.85	3.94	0.68
Crop diversification	3.83	0.97	4.06	0.70
Diversification of farm activities	3.45	1.14	3.93	0.69
Use of pesticides	2.89	1.11	3.93	0.86
Use of fertilizer	3.31	1.06	4.20	0.63
Organic production	3.52	1.20	2.90	0.97
Improving the quality of production	4.05	0.99	4.07	0.69
Investments for structural and technological	4.19	0.79	4.19	0.67
Financial hedging (e.g., future contract)	3.58	0.97	3.57	0.86
Money savings for times of financial hardship	3.76	0.95	4.04	0.79
Increasing off-farm incomes	3.55	0.96	3.79	0.95
Avoiding loans	3.93	1.05	3.21	1.05
Increasing the level of production	3.60	1.07	3.63	1.02
Direct selling	3.63	1.12	3.97	0.78
EU direct payment	3.86	1.00	3.94	0.81

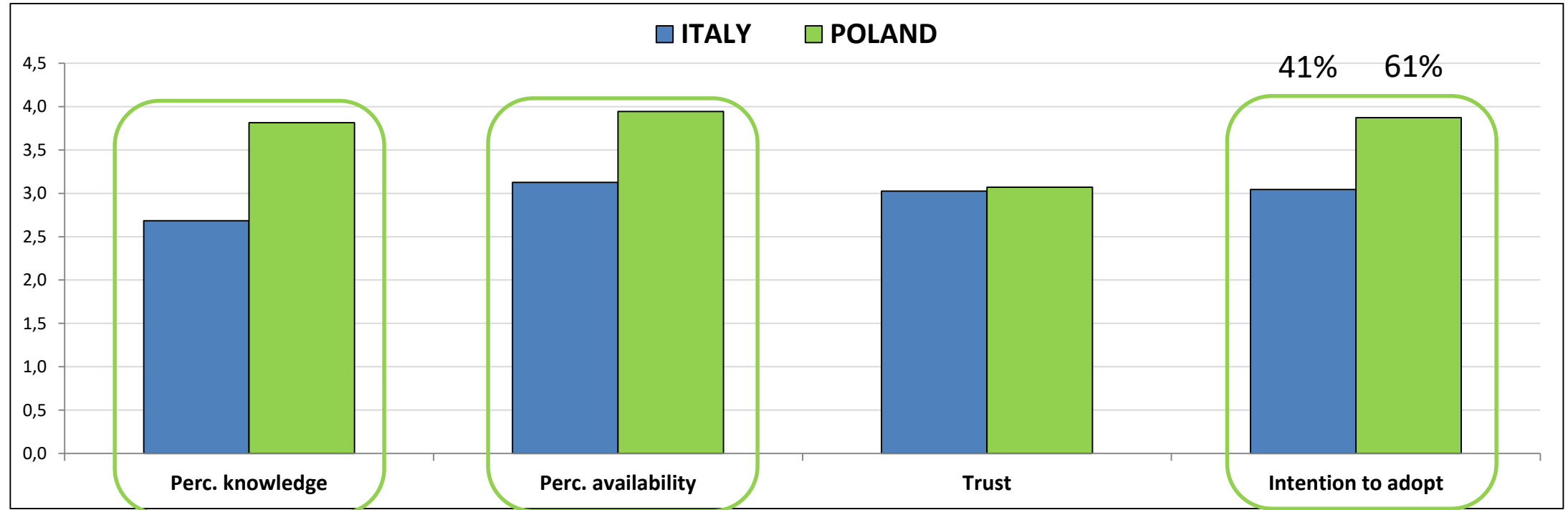
PREFERRED SELF-COPING STRATEGIES



PREFERRED SELF-COPING STRATEGIES



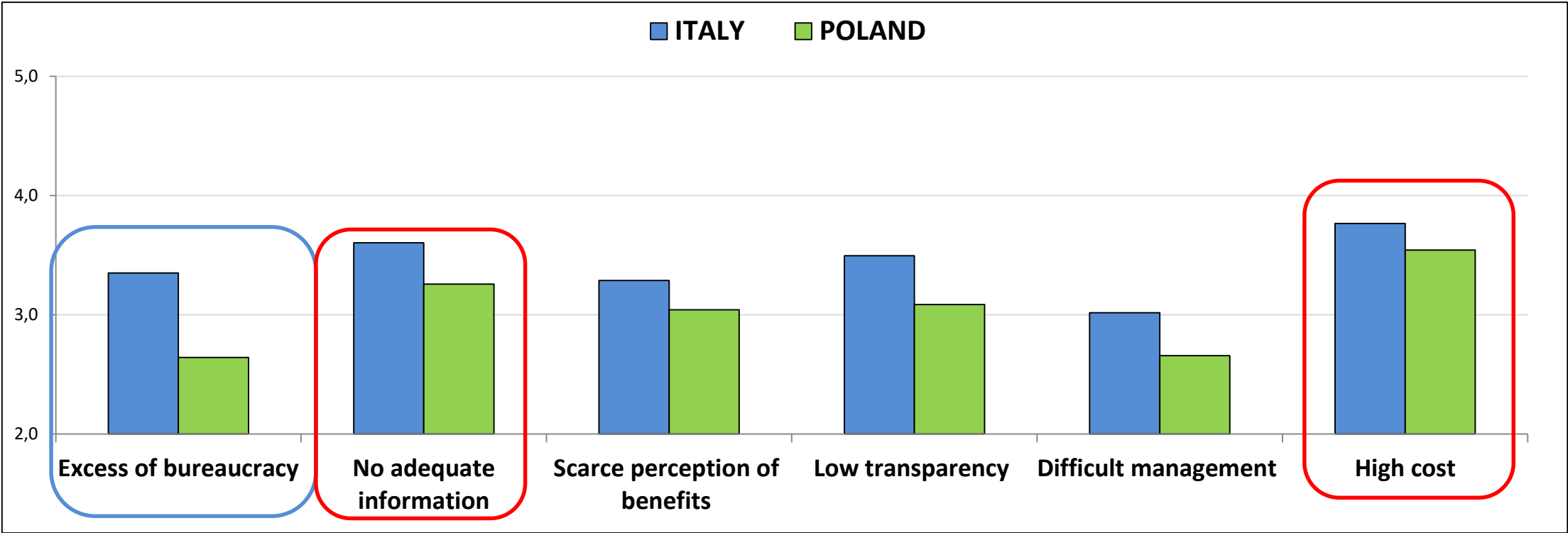
PERCEIVED KNOWLEDGE and AVAILABILITY, TRUST TOWARDS THE INTERMEDIARIES and SUBJECTIVE INTENTION TO ADOPT INSURANCE IN THE NEAR FUTURE



Note: 3 items for trust

	Perceived knowledge		Perceived availability		Trust		Intention to adopt	
	Mean	S.D.	Mean	S.D.	Mean	S.D.	Mean	S.D.
ITALY	2.68	1.21	3.13	1.02	3.02	0.17	3.05	1.18
POLAND	3.81	1.09	3.94	0.98	3.07	0.18	3.87	0.99

PERCEIVED BARRIERS TO INSURANCE ADOPTION



		Excess of bureaucracy	No adequate information	Scarce perception of benefits	Low transparency	Difficult management	High cost
ITALY	Mean	3.35	3.60	3.29	3.50	3.02	3.77
	S.D.	1.09	1.16	1.18	1.05	1.04	.92
POLAND	Mean	2.64	3.26	3.04	3.09	2.66	3.54
	S.D.	1.27	1.06	.84	.86	.78	.93

CONCLUSION

Preliminary descriptive information from an on-going field survey among farmers aiming at explaining factors affecting insurance uptake.

Generally speaking...

<i>FACTORS</i>	<i>ITALY</i>	<i>POLAND</i>
<i>RISK FREQUENCY (AND IMPACT)</i>	higher for hail	frost
<i>RISK CONTROL</i>	high for drought	
<i>SELF-COPING STRATEGIES</i>	high for organic production	high use of technical input
<i>OTHERS</i>	high perception of barriers to insurance adoption (cost, lack of info, bureaucracy)	high knowledge and availability of insurance tool and intention to adopt insurance (61%)
<i>AGRICULTURAL INSURANCE</i>	voluntary measure (EU and state aid)	compulsory measure to receive EU direct payments

**Thank you
for your attention.**

Prof. Samuele TRESTINI - Dr. Elisa GIAMPIETRI

samuele.trestini@unipd.it - elisa.giampietri@unipd.it

PERCEIVED RISK FREQUENCY AT FARM LEVEL (Italy)

ITALY	CROP		PERMANENT		LIVESTOCK		MIXED	
	Mean	S.D.	Mean	S.D.	Mean	S.D.	Mean	S.D.
Frost	3.83	.96	3.75	.96	3.77	1.17	3.44	1.15
Storms	3.75	1.15	3.54	1.09	3.85	.99	3.00	1.24
Hail	4.08	1.06	4.38	.70	3.92	1.04	4.11	.90
Heavy rain	3.79	.98	3.34	1.18	3.54	1.05	3.33	1.33
Severe drought	4.04	1.00	3.88	.99	3.85	1.21	3.72	1.23
Animal diseases	.00	.00	.00	.00	3.62	1.19	3.50	.99
Plant diseases	3.96	.86	3.95	.86	.00	.00	4.00	.91
Pest Infestation	3.92	.88	3.84	.97	3.46	1.33	4.17	.92
Severe drop of market prices	3.92	1.10	3.59	1.14	3.69	1.11	3.83	1.15

PERCEIVED RISK IMPACT AT FARM LEVEL (Italy)

ITALY	CROP		PERMANENT		LIVESTOCK		MIXED	
	Mean	S.D.	Mean	S.D.	Mean	S.D.	Mean	S.D.
Frost	3.42	1.18	3.77	1.29	2.92	1.04	2.72	1.13
Storms	3.21	1.22	3.00	1.22	3.08	1.04	2.61	1.04
Hail	4.13	.99	4.32	1.06	3.46	1.05	3.56	1.34
Heavy rain	3.46	1.18	3.21	1.11	3.08	1.32	2.83	1.04
Severe drought	3.96	1.12	3.59	1.17	3.46	1.45	3.39	1.29
Animal diseases	.00	.00	.00	.00	4.08	1.12	3.39	1.14
Plant diseases	3.92	.93	3.63	1.20	.00	.00	3.61	1.09
Pest Infestation	3.67	1.31	3.63	1.24	3.54	1.51	3.89	1.18
Severe drop of market prices	4.13	1.15	3.93	1.09	3.92	1.26	3.89	1.08

PERCEIVED RISK CONTROL AT FARM LEVEL (Italy)

ITALY	CROP		PERMANENT		LIVESTOCK		MIXED	
	Mean	S.D.	Mean	S.D.	Mean	S.D.	Mean	S.D.
Frost	2.00	1.10	2.04	1.24	2.08	1.12	1.94	1.21
Storms	1.92	1.18	2.21	1.29	2.15	1.07	1.67	1.03
Hail	2.21	1.38	2.23	1.48	2.00	1.15	2.22	1.26
Heavy rain	1.92	1.28	2.05	1.18	2.00	1.22	2.17	1.29
Severe drought	2.79	1.35	3.11	1.23	2.23	1.30	2.67	1.53
Animal diseases	.00	.00	.00	.00	2.85	1.41	3.22	1.22
Plant diseases	3.29	1.23	3.18	1.18	.00	.00	3.17	1.25
Pest Infestation	3.58	.88	3.11	1.19	2.31	1.18	3.11	1.45
Severe drop of market prices	2.08	1.25	2.00	1.16	1.54	.88	2.17	1.29